

# THE REVIEW

Rousay, Egilsay & Wyre's Community Newsletter

PUBLISHED BY  
ROUSAY  
COMMUNITY  
ASSOCIATION

& part-funded by REWDT



Rousay Horticultural Society

## Rousay Show

Sunday 4<sup>th</sup> August  
Rousay Community School  
Show opens at 2.30pm, prize-giving at 4pm

Entry: £2 adults (children FREE)  
Tea, coffee, juice & homebakes

Come and see exhibits in the following categories:  
Textiles, Handicrafts, Baking, Dairy, Preserves,  
Vegetables & Fruit, Flowers, Children  
and Visiting Adults & Children.

Download the Show Schedule & entry labels  
at [www.aroundrousay.co.uk](http://www.aroundrousay.co.uk)

Entries to the Show are FREE. Exhibits must be submitted on  
Saturday 3<sup>rd</sup> August, 7.30pm - 9pm, at Rousay Community School.

Our Stewards will be able to direct you, and help you complete your exhibit entry labels.



RCA

### Rousay Community Association Meeting

The next meeting of the Rousay Community Association will be taking place on Monday 26<sup>th</sup> August at 7.30pm in the Community Room at Rousay School.

Contact the Editor  
to submit an article or to subscribe:

[kayleigh@aroundrousay.co.uk](mailto:kayleigh@aroundrousay.co.uk)

01856 821360

Kayleigh Tipper, Howdis Meadow,  
Rousay, Orkney, KW17 2PR

Deadline for the  
next edition:  
**27<sup>th</sup> August 2019  
5pm**

Late articles are not  
guaranteed to be included.

## August 2019

### What's On this month in Rousay, Egilsay & Wyre

#### Saturday 3<sup>rd</sup> August

→ Rousay Show Entry Evening, Rousay School, 7.30pm - 9pm

#### Sunday 4<sup>th</sup> August

→ Rousay Show, Rousay School, Show opens 2.30pm  
(prize-giving at 4pm)

#### Tuesday 6<sup>th</sup> August

→ The Taversoe InnQUIZition, The Taversoe, 8pm

#### Monday 12<sup>th</sup> August

→ Dementia Workshop, Church Centre, 1pm - 3pm

#### Saturday 17<sup>th</sup> August

→ Community Land Week Event, Rousay School, 2pm - 5pm

#### Saturday 24<sup>th</sup> August

→ REW&G Community Council Meeting, Rousay School,  
10.15am

#### Monday 26<sup>th</sup> August

→ Rousay Community Association Meeting, Rousay School,  
7.30pm

#### Wednesday 28<sup>th</sup> August

→ Orkney Citizens Advice Bureau Outreach Visit, Church  
Centre, 11.30am - 2.30pm **BOOK**

#### Saturday 31<sup>st</sup> August

→ Rousay Lap, 12pm start

#### Weekly Activities

##### Mondays

→ Coffee Morning, The Crafterhub, 11am - 1pm

→ Bridge, Rousay School, 7.30pm - 9.30pm

##### Tuesdays

→ Yarn & Yap, The Crafterhub, 11am - 1pm

→ Tai Chi Chuan (Energy Exercises), Rousay School, 3.20pm

→ Tai Chi Chuan (Tai Chi Form), Rousay School, 4pm

→ **No Tai Chi on 6<sup>th</sup> August**

##### Wednesdays

→ Triangle Club, Church Centre, 9.45am-1pm

##### Thursdays

→ Coffee Morning, The Crafterhub, 10am - 11am

##### Fridays

→ Rainbows, Brownies & Guides, Rousay School, 3.10pm -  
4.30pm

##### Sundays

→ Fatburn Extreme, Rousay School, 11am

#### Coming Up

##### Thursday 19<sup>th</sup> September

→ Orkney Mobile Library visits Rousay & Egilsay

##### Saturday 21<sup>st</sup> September

→ NILPS Snorkel Session **BOOK (by 15<sup>th</sup> August)**

##### Saturday 26<sup>th</sup> October

→ Harvest Home, Rousay School

##### Tuesday 5<sup>th</sup> November

→ Fireworks Display, Rousay

##### Saturday 9<sup>th</sup> November

→ REW&G Community Council Meeting, Rousay School,  
10.15am

##### Thursday 14<sup>th</sup> November

→ Orkney Mobile Library visits Rousay & Egilsay

##### Saturday 25<sup>th</sup> January

→ Burn's Supper, Rousay School



### Opening Hours

Monday - CLOSED  
Tuesday to Saturday  
11am to 11pm  
Sunday 11am to 10.30pm



### Food Service Hours

Monday - CLOSED  
Tuesday to Saturday  
12pm to 9pm  
Sunday 12pm to 8pm



### The Taversoe InnQUIZition

Tuesday August 6th @ 8pm  
Free Entry  
Snowball Jackpot

**Last food orders 30 minutes before the kitchen closes**

### I'd like to thank everyone for their patience at The Taversoe over the past few busy weeks

With limited space in our dining room, to avoid disappointment, I would kindly ask you make a reservation should you wish to come in for a meal.

Many thanks for your understanding, Cxx

**We can not guarantee take-out availability at this time**

*My Favourite Thing to Make for Dinner is a Reservation*



### Rousay Tai Chi Chuan

Classes in August will be only on Tuesday 13th, 20th & 27th August (at the School) starting at 3:20.

Only £2.00 for one or both.

All ages and abilities welcome.

As numbers attending are low due to the holidays, please contact Helen if attending on 07879 686509.

If numbers do not increase, classes will stop next month.



Thanks to REW DT for part funding this.



[www.facebook.com/orkneytaichi](http://www.facebook.com/orkneytaichi)

### Orkney Mobile Library

Visits to Rousay & Egilsay in 2019:

19<sup>th</sup> September  
14<sup>th</sup> November



### Orkney Citizens Advice Bureau

Orkney Citizens Advice Bureau has an outreach visit to Rousay:

28<sup>th</sup> August 2019  
11.30am to 2.30pm  
Church Centre.

We are there to advise on any issue.

To make an appointment or arrange a home visit, please contact (01856) 875266, no later than Thursday 22<sup>nd</sup> August, thank you.

# Would you be interested in learning to snorkel in Rousay ?

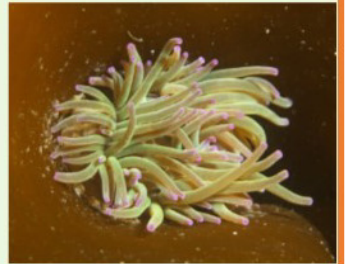
The North Isles Landscape Partnership Scheme would like to organise a 'try a snorkel' session for island residents on Saturday **September 21st** but are keen to gauge interest before moving forward.

The event would aim to encourage people to explore and record the marine wildlife around Rousay. It would be open to adults and children 14+.

A £10 cost will include all equipment and instruction from Scapa Scuba.

**Booking before August 15 essential. The event will require a minimum of 6 participants to go ahead.**

For more info and to book please contact Anne on 01856 879076  
Or email: [anne.bignall@orkney.gov.uk](mailto:anne.bignall@orkney.gov.uk)





The North Isles Landscape Partnership Scheme, funded by the National Lottery Heritage Fund, aims to preserve, enhance and promote the built, cultural and natural heritage of the North Isles. Some projects will be undertaken on multiple islands, whilst others are specific to Rousay, Egilsay & Wyre. The following list gives a summary of some of the activities included in the scheme and the NILPS team will be working with island groups and local residents to take them forward over the next 4 years

# Rousay, Egilsay & Wyre

## *Projects*

### **Walking routes**

Improvements to the infrastructure along some of the walking trails, such as signage, interpretation and access will be undertaken.

### **Traditional Skills**

Opportunities to learn traditional crafts and skills through courses and workshops. Examples include dry stone dyke work, hand and machine knitting but we will be looking at other possibilities too.

### **Oral History project**

This project will build on work already carried out; creating a record of the spoken word and dialect throughout the North Isles.

### **Small grants scheme**

Grants of up to £2000 available for community projects that focus on the natural, cultural or built heritage.

### **Built heritage**

A variety of built heritage projects have been identified across the North Isles and in Rousay this includes the Old Pier Store that will be sympathetically renovated to create a space to complement the existing heritage centre; displaying agricultural and domestic artefacts from the 19<sup>th</sup> and 20<sup>th</sup> centuries

### **Education and Learning**

Opportunities for young folk to learn more about their island's history, heritage and culture. A Youth Ranger Scheme & Storytelling workshops are examples of the activity outlined in this project.

### **Traditional red phone box trail**

There are two red phone boxes remaining in Rousay. They were once an invaluable communication resource but are now in need of repair and attention. They form part of the island's social history and the boxes could be restored, perhaps with an imaginative future use?

### **Tombs of the Isles**

This project will offer training in archaeological techniques. Lesser known tombs across the North Isles will be researched and feature in a 'North Isles landscapes of the dead' trail.

### **Industrial heritage of the Isles**

This project will enable residents to learn more about the island's industrial past and ways of recording this element of history.

### **Wildlife recording activities**

This project aims to record and learn more about different elements of the island's wildlife. There will be some general wildlife recording activities as well as some more focused studies on particular species.

### **Habitat survey and restoration project**

Habitat surveys will be undertaken at sites across the north isles. Where possible, places will be identified where work can be undertaken to restore them to support biodiversity. This project also includes a wild flower seed collection and propagation training course.

### **Seas of the Isles**

The importance of seafaring to the North Isles will be explored in a multi-faceted project that will include workshops on subjects such as maritime art, shipwrecks and pre-historic seafaring.

**If you'd like to find out more, please visit [www.nilps.co.uk](http://www.nilps.co.uk)**

**Email [nilps@orkney.gov.uk](mailto:nilps@orkney.gov.uk) or phone 01856 879076  
to speak to a member of the project team.**



HISTORIC  
ENVIRONMENT  
SCOTLAND

ÀRAINNEACHD  
EACHDRAIDHEIL  
ALBA





## Plants from Rousay Growers

- Trees:** Alder Aspen Ash Whitebeam in containers, priced at £2 per foot.  
Salix caerulea--£5 each
- Shrubs:** Cotoneaster HxS 1'x10' £2.50 each  
Escalonia Apple Blossom HxS 3'x3' in 5 yrs. £3  
Crimson Spire HxS 4'x4' in 5 yrs. £3
- Hebe:** Carnea 3 colour racemes  
Blue racemes  
Odua white flowers all £3.50 each
- Olearia:** Henry Travers HxS 6'x6' in 5 years £4  
Macrodonata HxS 8'x8' in 5 years £5
- Juniperus Horizontalis** Emerald. A slow growing evergreen perennial.  
A snip at £12 each.
- Potentilla** Elizabeth – yellow Tangerine Daydawn -peach /pink all at £4.25

- Unusual Plants:** Burdock: Roots and shoots make tonics HxS 5'x4' £2.25  
Cardoon: Tall edible plants good in borders £2.25  
Monarda/Bergamot: Aromatic border plant, attracts butterflies  
£1 for 3 plants  
Mullein: Used in homeopathy -long spikes of flowers £2 each  
Salsify: Purple flowers; eat roots in November £2 each  
Tagetes Mexican: Annual can grow to 6', and is used to kill elder  
And couch grass £1/pot

- Perennial Flowers:** Aquilegia Mrs. Scott Elliotts mixture £2.50 each  
Coreopsis Large plants with golden flowers £1.60 each  
Dianthus Excelsior Hybrid shades of pink £1.50 each  
Lupin 2 year plantlets £1.50  
" Multi-crowned £4.80  
Lithodora: Diffusa HxS 12"x20" blue, bell shaped flowers £3  
Digitalis: Excelsior Hybrids £2 each

- Herbs:** Chives, Mints, Parsley, Sage in pots priced by size



## Rousay, Egilsay & Wyre Development Trust

### Community Update: August 2019

#### Update from Rachael

I started work as the Development Trust's new Project Officer in June and have been familiarising myself with the various projects that I will be responsible for progressing. One of my main roles is to help facilitate the Trumland Land purchase and then to develop, and find funding for, the related projects as voted for in the last community survey. The purchase process is extremely complex and is likely to take some months yet so, meantime, I have been researching the possibilities for creating access paths to viewing points at the top of Kierfea and nearby the big community turbine at Kingarly.

'Community Land Scotland' have designated 10<sup>th</sup> – 18<sup>th</sup> August as 'COMMUNITY LAND WEEK 2019' to celebrate community land ownership throughout Scotland. Though still at the early stages with regard to Trumland, REWDT were invited to join in these celebrations so I am organising a family-friendly event for Sat 17<sup>th</sup>. It will be centred around a tiny but fascinating plant, the 'Round-Leaved Sundew', that only grows in the peaty soils of hill-land such as we have in the centre of Rousay. There will be various arts activities open to all ages, an information board outlining ideas and possibilities for some of the Trumland projects and I will, of course, be on hand to discuss them. The local Brownies & Guides will be serving drinks & snacks and hoping to earn some money towards their future activities so please give generously!

*Rachael*

#### Gill's Meet & Greet

This month, there will not be a 'Meet & Greet' due to the holiday period. If you wish to chat about anything, please call Gill at the Office.

#### The Pier Restaurant

The directors are still awaiting the final information from the consultants regarding the valuation, feasibility study and potential new designs for the Pier Restaurant. We are expecting these any day and once available we would like to share these with you all. More information to follow.



*Heat Smart Orkney Ltd*

#### Director Vacancies

H&S Ltd has a vacancy on their Board of Directors.

**Do you want to make a difference to your community?**

If you would like to be involved in the moving forward, running & management of this exciting H&S project (using the curtailed power from the Community 900kW turbine to reduce fuel poverty on our isles), we would be happy to hear from you.

The board usually meets around 4 or 5 times a year and only when necessary.

If you want more information, please feel free to contact the staff who will be happy to answer any questions you may have.

We look forward to hearing from you soon. Closing date is **Friday 30<sup>th</sup> August 2019 at 5 p.m.**

Registered Office: The Manse, Rousay, Orkney, KW17 2PR. Telephone: 01856 821229. E-mail: [info@rewdt.org](mailto:info@rewdt.org)

REWDT

# *Community Land Week*

## **COMMUNITY LAND WEEK EVENT**

AS PART OF THE SCOTTISH GOVERNMENT'S 'COMMUNITY LAND WEEK'

REWDT IS HOLDING AN AFTERNOON EVENT ON

**SATURDAY 17<sup>th</sup> AUGUST**

**2 – 5pm**

**ROUSAY COMMUNITY SCHOOL**

## **ART ACTIVITIES**

**FOR ALL AGES**

**REFRESHMENTS WILL BE AVAILABLE SERVED BY**

**1<sup>st</sup> Rousay Rainbows & Brownies & 1<sup>st</sup> Rousay Guides**

**(all proceeds to them so please give generously)**

**COME ALONG & HAVE SOME FUN & FOOD!**

**THIS IS ALSO AN OPPORTUNITY TO SPEAK TO RACHAEL HARRIS (REWDT PROJECT OFFICER) ABOUT THE TRUMLAND LAND PURCHASE & ASSOCIATED PROJECT IDEAS.**

**OPEN TO EVERYONE**

REWDT

On Your Marks for the  
**11th Annual**  
**Rousay Lap Half Marathon**  
**Saturday 31 August 2019**  
Come and Run, Cycle or Walk



**FREE ENTRY - DONATION TO RNLI**  
**STARTS 12:00 REGISTRATION 10:00 - 11:45**

To book a ferry in advance, phone 01856 751360

Tingwall to Rousay - 08:40 & 10:40

Rousay to Tingwall - last boat at 17:30

Further information and entry forms online

[www.rewdt.org](http://www.rewdt.org) or phone 01856 821 229



*From the community  
For the community*



**Volunteer Driver Trial Scheme (off Rousay only)**

The REW DT have been asked if it is possible to provide a car driving service using the electric vehicle. The idea is to have a pool of volunteers preferably PVG registered, who could hire the car and drive mainly but not exclusively the older residents who do not have access to a car, to appointments on Mainland Orkney. This could be for example, a visit to the hospital or to take a pet to the vets etc. The car hire would be paid for by the resident, not the driver.

At the moment we only have one volunteer, Sarah Foulds. If you wish to book Sarah, please call her on 07756 939413.

If you would like to volunteer, please contact the office, we would like to discuss with all those who offer their help, how this service could be managed successfully.



**Defibrillator Volunteer Request**

We now have two volunteer responders for this potential project, but for it to work well, we need a few more. If you are interested, please contact the REW DT Office.

The Community Heartbeat Trust has contacted the REW DT to see if, as a community, we would like to operate a defibrillator scheme. The volunteers would be allocated a section of Rousay (normally the area they live in) and if an emergency occurred in their area they would be required to go to the nearest defibrillator and get this to the incident scene and if needed, operate the defib until the emergency services arrive. The defibrillators also require a daily check which takes around 15 seconds to do.

If we have enough volunteers the REW DT will look at getting defibrillators installed in zones (agreed with the Community Heartbeat Trust) around Rousay and arrange for full training on the use of the defibs. The REW DT will also cover the replacement battery, pads and any other costs involved in ensuring these machines are kept in perfect condition and ready for use.

**Rousay Lap Half Marathon**

The Rousay Lap Half Marathon will be on **Saturday 31<sup>st</sup> August.**

We look forward to seeing you there either taking part or as a volunteer cheering cyclists, runners and walkers over the finish line or as a Marshal at one of our water stations, (please let Helen or Gill know if you can be a marshal, £10 gift voucher for all).

Please can residents try to avoid parking in front of the Heritage Centre, the Lap start line and if possible, along the Pier Road from 11:30 on Saturday 31<sup>st</sup> August until after all participants have cleared the area. This will allow for a smoother start of the Rousay Lap (start time 12:00 noon) and avoid any potential accidents.

Please can car drivers take care during the afternoon as there will be cyclist, runners and walkers along the Rousay Lap route which is along the Pier Road and anti-clockwise around the main circular road finishing outside Trumland House. The race will end at 4:30. Thank you for your consideration.

### WELL-BEING ON ROUSAY EGILSAY AND WYRE

What does well-being mean to you?

If you or someone you know needs support or information that may help enhance well-being, then maybe I can help.

Whether it is seeking practical support, or seeking advice to manage physical or emotional issues or setting up a support group.

If you would like to arrange a visit I can be contacted on : Tel 821 229

Or email: [sarah.foulds@rewdt.org](mailto:sarah.foulds@rewdt.org) my normal working hours are Wednesdays and Thursdays 8am - 3pm, visits can be arranged for any day of the week. All calls will be treated in the strictest confidence.

### What's coming up.....

Wednesday 31st July 11.00am - 12.00pm - 'drop in' session at The Craffhub

Dementia workshop - Monday 12<sup>th</sup> August 1 - 3pm at The Church Centre Rousay - open to everyone to provide advice and information about dementia and how we can make our community dementia friendly.

If you have an idea about promoting well-being please give me a call.



EUROPE & SCOTLAND  
European Social Fund  
Investing in a Smart, Sustainable and Inclusive Future



#### Free Wi-Fi access

(plus access to a laptop and printer):

Monday: 10am to 3pm  
Tuesday: 10am to 3pm  
Wednesday: 10am to 3pm

If you need to use the Wi-Fi and/or the laptop and printer outwith these times, you will need to make an appointment with staff, who will be as accommodating as possible.



Regular help with a range of household tasks, at a rate subsidised by the Trust.

Contact Gillian at  
Age Scotland Orkney direct:  
01856 872438  
[gillian@ageconcernorkney.org.uk](mailto:gillian@ageconcernorkney.org.uk)

#### Car Club

Hire our electric car from as little as £2.50 for 1 hour, or for as long as you need (e.g. 24 hours costs £18).



**Book the car online or via the Office.**

Car Club FAQs and T&Cs are available online.

#### Shredded Paper for Composting

We occasionally have bags of shredded paper available for composting. If anyone would like a bag, please contact the Office.



## Our Current Grant Schemes

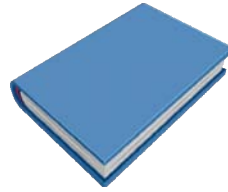


### Well Being 100 Fund

Apply for 100% of the cost of well being activities, including Active Islands/Life memberships.



A maximum of £100 per person, up to 31<sup>st</sup> March 2020.  
Open to adults & children.



### Educational Bursary

Apply for up to 100% of the cost of a nationally-recognised qualification.



A maximum of £500 (adults) & £100 (children in primary/secondary education).



### Driving Lessons

Apply for up to £500 towards the cost of your driving lessons with a qualified instructor.



A maximum of £500 per applicant.



### Child Ferry Tickets

Apply for one book of 50 ferry tickets for children (5-18, in full-time education).

### General Grants

Looking for funding which doesn't fit into one of our specific grant funds?  
Individuals and groups are also welcome to apply for funding from our 'General Grants' fund.

### Ready to apply?

To obtain an application form, please ring or call into the office. Completed forms can be sent by paper, or electronically to [grants@rewdt.org](mailto:grants@rewdt.org)

All applications must be received a minimum of **two weeks** before the training/event/payment due date, whichever is earliest, as well as a minimum of **two weeks** before the planned Board meeting date, to allow sufficient time for applications to be processed.

**The next two Board Meetings are planned for  
Wednesday 14<sup>th</sup> August & Saturday 28<sup>th</sup> September 2019.**

### Does Your Organisation or Community Group Need Financial Support?

Why not let REW DT support you in finding external funding opportunities and then help you with your grant application. If you would like to speak to staff about this offer, please contact the office. Alternatively, Megan McEwen from VAO in Kirkwall also offers to support community groups with finding funding opportunities.

### Opening Hours

Monday	10am-3pm ( <i>drop-in</i> )
Tuesday	10am-3pm ( <i>drop-in</i> )
Wednesday	10am-3pm ( <i>drop-in</i> )
Thursday	<i>By appointment only</i>
Friday	<i>By appointment only</i>

Please feel free to call in with any queries, advice, or grant applications during drop-in times.

Occasionally, all of the staff are away from the office on DT business, so if you wish to speak to us, it is always better to phone first, to make an appointment.



**Telephone:** 01856 821 229  
**General E-mails:** [info@rewdt.org](mailto:info@rewdt.org)  
**Grants E-mails:** [grants@rewdt.org](mailto:grants@rewdt.org)

**Visit our website:**  
[www.rewdt.org](http://www.rewdt.org)



[facebook.com/rewdt](https://facebook.com/rewdt)

### Directors:

John Garson (Chair), Kayleigh Tipper (Vice-Chair & Acting Treasurer), Christina Cox, Clare Daintith, Angus Flaws (co-opted), Mark Hull (co-opted), Carole Maguire, Alison Mainland, Bryan Milner, Eric Shortland.

**Rousay, Egilsay and Wyre Development Trust** is a charitable company limited by guarantee.

Co. Reg. No: SC318527 Charity Reg. No: SC040407

Registered Office: The Manse, Rousay, Orkney, KW17 2PR



## Allotment Association

Polytunnel plots are all taken, but we still have 3 outside plots available if anyone is interested, and the equipment is still available for hire. This year's plot fees are now due (for those that have not already paid) and you will be getting an invoice in the post very shortly.

For information about the allotment plots, polytunnel plots or equipment hire, please contact Ian on 07879 496686.

We have the following item for sale: -

**Tricoflex 25mm pipe @ £3.15 per metre**

Please ask Ian if you are interested.

### Islands View Surgery

The Surgery will be

**CLOSED**

on

**Monday 12<sup>th</sup> August**

If you require medical assistance in an emergency, please phone **999**.

If you require urgent medical advice, and cannot wait until the surgery is open, please contact the Balfour Hospital Switchboard on **888 000** and ask them to page the Rousay Nurse Practitioner.

### Surgery Opening Times

GP present on Monday and Friday mornings, and until 14:10 on Wednesdays.

<b>Monday</b>	<b>09:00-13:00</b>	
<b>Tuesday</b>		<b>14:00-18:00</b>
<b>Wednesday</b>	<b>09:00-11:00</b>	<b>16:00-18:00</b>
<b>Thursday</b>	<b>11:00-15:00</b>	
<b>Friday</b>	<b>09:00-11:00</b>	<b>16:00-18:00</b>

On Wednesday 14<sup>th</sup> August, the surgery will be closed to patients between 9AM and 11AM. Appointments with either the Nurse Practitioner or the GP will be available after 11AM. Admin staff will have limited ability to answer the telephone that morning, so wherever possible, please phone to order medication, make appointments, or book travel on either Tuesday or Wednesday afternoon. You are also welcome to e-mail the surgery instead. Our address is [ork-hb.gp38084-rousay@nhs.net](mailto:ork-hb.gp38084-rousay@nhs.net).

### Drop-ins

Patients are reminded that we do not offer drop-in appointments. We will always accommodate people in an emergency, but for non-urgent problems please ring ahead. Not doing so will potentially lead to a long wait or even a wasted trip. It is not fair to patients who have booked ahead to delay them for people who have not. Thank you for your consideration.



Rousay Primary School would like to thank the Rousay, Egilsay and Wyre Development Trust for their generous support, which allowed our Primary 4-6 pupils to attend the Hoy Outdoor Education Residential Trip.

Pupils learned many outdoor skills, experienced the value of teamwork, and challenged themselves; all important values which will follow them throughout their lives.



*From the community  
For the community*



Rousay School  
Parent Council

# THANK YOU!

Raising Money for

Rousay Triangle Club



## Thank You!

After a successful Fete in the daytime, the dance then also had a fantastic turn out! Thank you all so much for attending. We are still finalising the numbers as we have matched funding from Rousay, Egilsay, Wyre and Gairsay Community Council, to add in along with the support from Rousay Egilsay & Wyre Development Trust and Royal Mail and once we know the figure we will share it :-)

We are so overwhelmed at the support from all the businesses, community and everyone that came along to the day and night events.

We truly hope you enjoyed it and we hope to do something again next year!

Thank you  
Rousay Parent Council

RCA

### Rousay Community Room Bookings

Community Rooms must be booked in advance.

Failure to book may lead to the room you require being unavailable.

To book for your function, contact Laura:  
Mobile: 07884 041 901  
E-mail: lar.06@hotmail.co.uk

### Wanted

An old bath to use as a water tub for sheep.

Call Angela (07810 760 858).



### County Show Tickets

Available from Angus Firth at Langskail (821 200).

# AUGUST @ THE CRAFTHUB CIC

01856 821359

THE PIER – ROUSAY | CRAFTHUB@BTCONNECT.COM

**OPEN DAILY 11am to 5.30pm**  
**(Open @ 10am Thursdays)**



**Tea – Coffee – Soft Drinks**  
**Homebakes – Light Refreshments**  
**Orkney Ice Cream**



## COFFEE MORNING

EVERY MONDAY 11AM TO 1PM  
EVERY THURSDAY 10AM TO 11AM

## YAP & YARN

EVERY TUESDAY 11AM TO 1PM

## COMING UP

WATER BASED OIL PAINTING WORKSHOP – INGRID GRIEVE  
SPINNING WORKSHOPS

**PLEASE PHONE OR POP IN TO REGISTER INTEREST – MANY THANKS**

Please note on Tuesday 6<sup>th</sup> August between 11am to 3pm  
space in the Crafhub will be restricted due to a private  
booking



Workshops Supported by  
Rousay, Egilsay & Wyre Development Trust

## ROUSAY, EGILSAY and WYRE HERITAGE SCIO

Soon after work on the renovation of the Wyre Community and Heritage Centre commenced, serious structural problems were discovered which rendered the renovation project unfeasible. The main funders of the project have indicated the possibility of transferring their funding to a new project whereby the existing building is replaced by a new structure.

Tenders are, therefore, invited for the replacement of the Wyre Community and Heritage Centre by a new building.

The funding arrangements require this project to be completed to a very tight schedule.

Full details are available from REW Heritage c/o Everybist, Rousay, KW17 2PS

or from [everybist@gmail.com](mailto:everybist@gmail.com)



**OSCR**  
Scottish Charity Regulator  
[www.oscr.org.uk](http://www.oscr.org.uk)

Registered SCIO  
SC048300



# ROUSAY HEALTHY LIVING CENTRE

AUGUST 2019

(01856 821 443)

## Opening Hours

### Supervised Sessions

Monday	19:00 - 21:00 *
Tuesday	19:00 - 21:00 *
Wednesday	x x x
Thursday	19:00 - 21:00 *
Friday	x x x
Saturday	16:00 - 17:00
Sunday	x x x

\* The gym will close at 20:15 if empty

### Buddy System

#### During the School Holidays

##### Buddy System Hours

Helen Castle has kindly agreed to make the Buddy System available during Tai Chi on Tuesday July 30th & Tuesday August 13th and additional Buddy System access will be available from 3.30pm to 4.30pm on Monday August 12th & Wednesday August 14th

##### Sunday Morning Buddy System

11am to 12pm - During Rousay FBX

##### Term Time Buddy System

Resumes on Tuesday August 20th

**We will publish any changes to the above hours and any additional hours of opening on our Facebook pages:**

## FATBURN EXTREME

Rousay Community School Hall  
Sunday 11am

**FREE - ActiveLife & ActiveIslands**

**50p - ActiveBudget Members**

**£4.40 - Standard 30min Class Fee**



### Buddy System

#### Term Time Buddy System

Monday	08:30 - 17:00
Tuesday	08:30 - 15:00
Wednesday	08:30 - 17:00
Thursday	08:30 - 17:00
Friday	08:30 - 15:00
Saturday	x x x
Sunday	11:00 - 12:00**

\*\* During Rousay FBX



Keep up to date with our official Facebook page and groups:

"Rousay Healthy Living Centre" "Rousay Boxercise"  
"Rousay Fatburn Extreme" "RHLC Buddy System"



ORKNEY ISLANDS COUNCIL