

# Rousay, Egilsay & Wyre REVIEW

June 2015

Electronic Edition



## Strawberry Teas

### Strawberry Teas



Sunday 14th June  
Church Centre  
3 - 5 pm



Come and enjoy  
Local strawberries and home bakes  
Shortbread, scones,  
meringues, pastries

## Singlinging Ladies



Come on Summer this is  
Midsummer Madness!

Singlinging Ladies  
at Craft Hub.

20.00



Thursday 11th and 25th

### What's On at a Glance

#### June 2015

#### Tuesday, 2<sup>nd</sup>

→ Taversoe InnQUIZition, 8pm

#### Thursday, 4<sup>th</sup>

→ Mobile Library Van

#### Sunday, 7<sup>th</sup>

→ Service, Church Centre, 11.30am

#### Tuesday, 9<sup>th</sup>

→ SWRI, Rousay School, 8pm

#### Thursday, 11<sup>th</sup>

→ Rousay Circle Dance, Church  
Centre, 11.15am-2pm

→ Singlinging Ladies, Crafhub, 8pm

#### Saturday, 13<sup>th</sup>

→ Service, Church Centre, 11.30am

#### Sunday, 14<sup>th</sup>

→ Strawberry Teas, Church Centre,  
3pm-5pm

#### Tuesday, 16<sup>th</sup>

→ REWG Community Council Meeting,  
Church Centre, 7.30pm

#### Sunday, 21<sup>st</sup>

→ Service, Church Centre, 11.30am

#### Monday, 22<sup>nd</sup>

→ Horticultural Meeting, Rousay  
School, 8pm

#### Thursday, 25<sup>th</sup>

→ Singlinging Ladies, Crafhub, 8pm

#### Saturday, 27<sup>th</sup>

→ Armed Forces Day, The Taversoe,  
7.30pm

#### Sunday, 28<sup>th</sup>

→ Service, Church Centre, 11.30am

→ Workshop, Crafhub, 12pm-2pm

→ Workshop, Crafhub, 2.30pm-  
4.30pm

#### Every Tuesday

→ Tai Chi, Rousay School, 3.15pm-  
5.15pm

#### Every Wednesday

→ Art Club, Crafhub, 3.15pm-4.15pm



SWRI

Tuesday 9th June 2015

SPEAKER  
Bob Nelson  
Polytunnel Gardening

OPEN MEETING  
ALL WELCOME

Refreshments served  
8pm at the Community Hall

#### Competitions

1. Floral Arrangement in Yellow and Black
2. Lamington Cake



### Rousay Circle Dance

Thursday, 11 June  
11.15 - 2 pm  
Church Centre  
Shared lunch  
Donations to Christian  
Aid  
Everyone welcome

*"It's the heart afraid of  
breaking that never  
learns to dance."*

*Xiaolu Guo*

### Horticultural Meeting

8p.m. Community School on Monday 22nd June

To discuss final arrangements for  
Rousay Show on Saturday 1st August  
Have you got your Show Schedule?



## The Taversoe

### Taversoe InnQUIZition

Tuesday 2nd June 8pm  
Fun Quiz, Free Entry  
Light Snack Supper  
Snowball Jackpot

### Armed Forces Day

Saturday June 27th 7.30pm  
Tea Dance - Big Band Music  
WW2 & 1940's Costume  
Munitions Inspired Drinks & Nibbles

### Advance Notice for July:

### Taversoe InnQUIZition

Tuesday 7th July 8pm  
Fun Quiz, Free Entry  
Light Snack Supper  
Snowball Jackpot

## Summer 2015

### Bar Opening Times

Monday - 11am to 5pm  
Tuesday to Saturday - 11am to 11pm  
Sunday - 11am to 10.30pm

### Food Served

Monday - Noon to 5pm\*  
Tuesday to Saturday - Noon to 9pm  
Sunday - Noon to 7.30pm

\*Should you wish to book a table on Monday evening please call and we will do our best to accommodate you  
If the bar is empty at 10pm we reserve the right to close



### Take-Out Orders

During the summer months we cannot guarantee we will be able to fulfil short-notice take-out orders.

We will do our best, but will appreciate your understanding over the busier months.



### Services in June Church Centre

Sunday 7<sup>th</sup> June, 11.30am  
Local

Saturday 13<sup>th</sup> June, 11.30am  
Roy Cordukes

Sunday 21<sup>st</sup> June, 11.30am  
Local

Sunday 28<sup>th</sup> June, 11.30am  
Communion  
Roy Cordukes

Everyone welcome.



[www.facebook.com/orkneytaichi](http://www.facebook.com/orkneytaichi)



### Rousay Tai Chi Chuan

New Classes  
New Tai Chi

Come and learn the 18 Tai Chi Chi Kung Set,  
The 8 Fine Treasures & The Short Round Form.

All welcome.

Every Tuesday at the School.  
Starts 3:15 until 5:15  
£5.00 per session.

All ages and abilities welcome.



### Mobile Library

The Orkney Mobile Library van will next visit Rousay and Egilsay on Thursday 4<sup>th</sup> June 2015.



Thanks to REW DT for part funding this

## Rousay Allotment Association



### Allotment news

As you will have noticed the polytunnel skin finally gave way to the wind back in March. Thanks to Richard Tipper for going to the rescue to collect the ripped skin up so it didn't blow away completely.

### HELP NEEDED

A new skin has been ordered and should be here soon, so if there is anyone who could offer a couple of hours to help out, we hope to put it on as soon as the weather is calm and dry. Please let me know on 821400 if you may be available.

The trees are doing well along the edge of the site, the wormery is producing fine compost and the rotavator has been serviced.

### FEES DUE

Fees are now due, £5 for associate members, which gives you the benefit of hiring equipment and other offers from time to time. Please call in to see Helen at the Development Trust offices to pay your dues.

### Plots Available

There are a few plots available this season, both in the polytunnel and outside. The outside plots will be rotavated ready to get started on, which is a great advantage.

The polytunnel plots are great value at £10 for the year, the outside plots are £20 including a shed. Please contact Hilary on 821400 if you are interested in taking a plot.

### Equipment Hire

Members can hire the equipment from the Allotment Association. The prices are as follows:

Rotovator	£10 a day plus fuel used	If you require someone to do the rotavating for you this will be £10 an hour for the man.	
Strimmer	£2.50 an hour plus fuel	Trailer	£10 a day or £2.50 an hour.
Shredder	£10 a day	including a 15m extension cable, goggles and collection bag	

To book hire for any of the equipment contact Hilary on 821 400

Happy gardening!



### Rousay Heritage Trust – Summer of Arts & Culture Programme June Review

RHT has been successful in gaining grant funding from OIC's The Culture Fund, and REWDT to put on a Summer of Art programme of events throughout the summer.

The programme will include, 3 adult art taster days, the first being on 28<sup>th</sup> June when Morag Tweedie will be here to teach us how to do Heat Transfer Printing, through an experimental, hands-on workshop in this simple printing technique. Learn how to transfer your own painted and collaged designs onto fabric. See separate poster for details. The remaining two taster days will be in July & August – more info to follow.

*Article continues on next page...*

*Article continued from previous page.*

There will be an art day for the children in August by Rachael Harris based around the turbine hand prints and the history behind this. This will be in partnership with the school.

In July we are hoping to put on, in partnership with the Pier Restaurant and the Blues Festival, a blues music night – again more information to follow in the next Review.

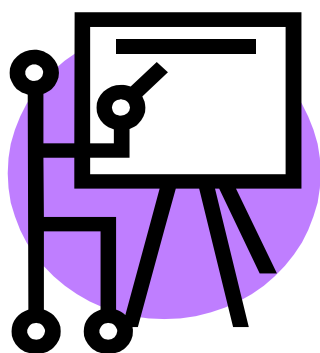
We would like to launch a new Street Art (previously known as the Road End) competition. See separate info in this Review. We would like to encourage as many residents as possible to produce any form of 'Art Work' that can be displayed along the main circular road on Rousay safely and fits into this year's theme which is entitled 'Gods of the Earth, Gods of the Sea' in acknowledgment of the Ian Hamilton Finlay sculpture that is located on Rousay (at the top of the Leean/Sourin Brae and across the road from the Blossom quarry).

The Competition Prize is a return ferry trip on the Pentalina for two adults, 2 children and a car. This prize is part funded via the grant award, and with donations from Pentland Ferries and REW DT. The prize will be awarded in September and the tickets will be valid until the end of September 2016. To ensure we get the maximum votes from visitors Helen will need to know who is happy to take part in this competition so that she can mark on a map where the art work will be displayed and your name (or title of the art work if it has one) and produce voting forms. The competition will start on 15 June until Saturday 29 August (to allow for visitors coming over for the Rousay Lap to be involved in the voting). Please can you let Helen know ASAP (via the REW DT office 821 229 or [helen@rewdt.org](mailto:helen@rewdt.org)) if you are interested, so far I only have 3 entries. Maps and voting forms will be at the Tingwall Ferry Office, The Rousay Waiting Room, The Eynhallow, The Taversoe and The Restaurant from the start of June. Votes will be counted in September and the prize notified in the following month's Review.

If you would like any further information, please contact Helen on 821 229 or [helen@rewdt.org](mailto:helen@rewdt.org)

## Rousay Street Art Competition

### Gods of the Earth, Gods of the Sea



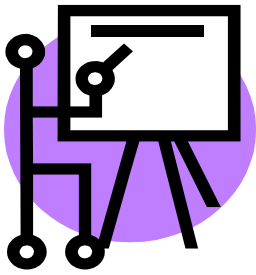
Rousay Heritage Trust  
in association with



Location -  
Along the Main Rousay Circular Road

Please let Helen know if you are happy to take part so she can mark on the voting map the location of your artwork. The competition will start in June and the voting will end on 29 August. The Prize is a return trip on the Pentalina for a car and family (2 adults, 2 children). Thanks to Pentland Ferries for part funding this prize.

Contact Helen 821 229 for more info.



## Summer of Arts

Workshop in Heat Transfer

Printing with Morag Tweedie

Sunday 28th June

12:00 to 14:00 or 14:30 to 16:30 at the Crafthub



Experimental, hands-on workshop in a simple printing technique.

Learn how to transfer your own painted and collaged designs onto fabric.

Easy and fun - suitable for complete beginners

Wear old clothes or bring an apron

Rousay Heritage Trust  
in association with



*From the community  
For the community*



Contact Helen 821 229 for more info and to book your place

### ROUSAY, EGILSAY, WYRE & GAIRSAY COMMUNITY COUNCIL

The representatives of the REWGCC are: Mr Angus Firth, Ms Chris Cox, Ms Rachael Harris, Mr John Garson, Mr Eric Shortland and Mr Richard Tipper.

#### **REWGCC Meeting – 16 June 2015 @ 7.30 p.m.**

The REWGCC meets on Tuesday, 16 June 2015 @ 7.30 p.m. in the Hall at the Rousay Church Centre. Members of the public are welcome to attend and view the proceedings.

Any requests for financial assistance or points to be brought to the attention of the CC need to reach the Clerk no later than 12 June 2015.

Clerk's contact details:

Email: [rewgcc@btinternet.com](mailto:rewgcc@btinternet.com) and  
addressed to the REWGCC c/o Mrs Compton  
or send to Midgard, Rousay, KW17 2PT  
or contact your local representative.



## The Craffhub C.I.C.

### CRAFTHUB NEWS

The Craffhub Directors would like to welcome a new crafter Hugh Mainland, who is now exhibiting his fine woodwork at The Craffhub including Brides Cogs, Small Cogs and Toadstool Needle Cases, all making perfect gifts for that special occasion.

The Craffhub is also now stocking local **charcuterie products** from Orkney Fine Meat Company, traditionally produced on Rousay. If you already purchase Brian's products, you will now be able to order direct from The Craffhub, if you have not yet tried any, pop in today. **BUY LOCAL and support The Craffhub**

### NEW FACILITIES

The Craffhub now offers a Wifi internet cafe. If you have no internet signal or your line is down, pop along to The Craffhub, help yourself to a filter coffee and catch up with emails etc. in a relaxing atmosphere. Open 7 days a week from 11am – 5.30pm.

### Craffhub Coffee Morning

Nothing to do on a Monday morning? Pop along to The Craffhub to meet up with others, chat over a cup of tea or a filter coffee or bring along your own crafts. 11am – 1pm. All ages welcome.

### Drawing Workshop

The Drawing Workshop with tutor Joseph Hewes will take place at The Craffhub on a Sunday afternoon, starting on Sunday 21<sup>st</sup> June from 3pm – 5pm, initially for 6 weeks. This is suitable for all ages and abilities, ranging from beginners to those who have experience. The cost of the 6 week block will be £60 including materials and refreshments. All residents of Rousay, Egilsay and Wyre can apply for a bursary from Rousay, Egilsay and Wyre Development Trust to cover 80% of the cost of this course, (providing they are eligible) making the cost only £2 per session to the participants. If you need help with the form or for any other questions or queries please contact Hilary on 821455 or pop in to The Craffhub direct. **BOOK YOUR PLACE TODAY!!**

### SUMMER OF ARTS at The Craffhub

As part of the Summer of Arts programme organised by the Rousay, Egilsay and Wyre Development Trust the first workshop will be on Sunday 28<sup>th</sup> June at The Craffhub. Morag Tweedie will be running two sessions on Heat Transfer printing. Look out for posters. These workshops are FREE. Book through REWDT office. Tel : 821229.

### ART CLUB

Art Club is on every Wednesday from 3.15pm – 4.30pm at The Craffhub, £3 a session including materials and refreshments. Come along and join the fun. Visiting children to the island welcome, but please book in advance.

### SUMMER OPENING HOURS

From Sunday 3<sup>rd</sup> May The Craffhub will be open 7 DAYS A WEEK from 11am – 5.30pm

If any residents would like to offer ideas, volunteer or start crafting, just contact Hilary on 821 455 to discuss.

For more information about any of the above phone Hilary at The Craffhub 821 455

email : [craffhub@btconnect.com](mailto:craffhub@btconnect.com) website : [www.craffhuborkney.co.uk](http://www.craffhuborkney.co.uk)





**Gardening Items For Sale**

We have the following items available for sale by sealed bids:

**Hotbox Heatwave Panel** - heated seed tray

**Wright Rain Mist Control Unit and Electronic Leaf** - irrigation system

If you are interested in these items, they are available for viewing at the Trust's Office during the Drop-In times shown further below.

Please put your bid in a sealed envelope, clearly marked with the item you are bidding for, and send into the Office by 16 June 2015.

**Rousay Lap**

This year's Rousay Lap will be held on Saturday 29<sup>th</sup> August. Entry forms are available from the Trust's website, or contact Helen in the Office.

**Free Child Swim Session**

Under-18s in full-time education and resident on Rousay, Egilsay or Wyre are entitled to free swim sessions at the Pickaquoy Centre Swimming Pool, funded by the Trust. Contact us for a Free Swim Scheme Card.

**Office 'Drop-In' Times**

Our 'Drop-In' times are usually 10am to 12 noon on Monday, Tuesday and Wednesday. If you wish to speak with staff outwith these times, please telephone the Office to make an appointment.

**Grant Applications and Education Bursaries**

All applications must be received a minimum of one week before the planned Board meeting date. The following meetings are planned (any changes to these will be published on our website): Wednesday 24 June; Wednesday 12 Aug; Saturday 3 October; Saturday 7 November (AGM), Wednesday 9 December.

**Here2Help**

The Trust currently provides a subsidy towards the cost of Age Concern Orkney's **Here2Help** service.

If you would like more information on this service, please contact Gillian Skuse at Age Concern Orkney - telephone 872438 or e-mail [gillian@ageconcernorkney.org.uk](mailto:gillian@ageconcernorkney.org.uk)

**Rousay Wi-Fi Centre**


The Wi-Fi Centre is fully operational within Rousay School. If you have any issues with the Centre, please get in touch with Helen in the Office.

**Contact Us**

**Telephone:** 01856 821229

**E-mail:** [info@rewdt.org](mailto:info@rewdt.org)

**Website:** [www.orkneycommunities.co.uk/rewdevtrust](http://www.orkneycommunities.co.uk/rewdevtrust)

**Facebook:** [www.facebook.com/rewdt](http://www.facebook.com/rewdt) 

Rousay, Egilsay and Wyre Development Trust is a charitable company limited by guarantee. Co. Reg. No: SC318527 Charity Reg. No: SC040407 Registered Office: The Manse, Rousay, Orkney, KW17 2PR

## Surgery Office Opening Times (Tel.: 821265)

(Note: the Doctor will not always be present or available during these hours)

<b>Monday</b>	<b>9:00-12:30</b>	<b>16:30-18:30</b>
<b>Tuesday</b>	<b>9:00-11:30</b>	
<b>Wednesday</b>	<b>9:00-11:30</b>	<b>17:30-19:30</b>
<b>Thursday</b>	<b>9:00-11:30</b>	
<b>Friday</b>	<b>9:00-11:30</b>	<b>16:30-18:30</b>

If you require medical assistance in an emergency, please phone **999**. If you require urgent medical advice, and cannot wait until the surgery is open, please contact the Balfour switchboard on **888000** and ask them to page the Rousay GP.

If you need to order medication when the surgery is closed, you can leave a message on the answering machine, or e-mail us on  
[ork-hb.gp38084-rousay@nhs.net](mailto:ork-hb.gp38084-rousay@nhs.net)

Please be as specific as possible about which medications you require, to prevent delays in ordering.

The Nurse is usually on Rousay on Wednesdays and Thursdays. She can be contacted directly on 821406. If you would like to talk to a Nurse outwith those days, please phone the Dounby Nurses on 771540.

If you have any over-the-counter or prescription medication that is out of date or that you no longer need, please hand it in to the surgery so that we can dispose of it safely for you.

The Doctor will be on Egilsay on **Monday 15<sup>th</sup> June**. If you would like an appointment, please contact the surgery.

## Keeping Orkney Safe

### Locating a Patient in an Emergency



In the event of a cardiac arrest in the Community, time can make the difference between life and death. Community responders, and more recently the work of the Orkney Heart Support Group in placing defibrillators in some local schools, have improved services enormously. However, one significant factor delaying treatment can be actually locating the patient. Many houses in Orkney are partially numbered or un-numbered and some have no name plate, or names which are hard to spot from the road. Finding a location in a rural area can prove even more difficult if ambulance crews have only a house name and parish to guide them. The Scottish Ambulance Service use GPS systems to guide crews to the area but with houses often clustered in groups of three or four, finding the precise location of the casualty can waste vital minutes.

#### What can you do to help?

- Clearly name and number your house and ensure the name or number plate is easily visible from the road even at night
- In rural locations place house names at the road end as well as on the house itself.
- Car hazard lights - in the event of a 999 call, if you have a car in front of the house, and you have the opportunity, switch on the hazard lights,
- If you have a friend or relative available to help, ask them to wave down the ambulance crew or on-call doctor as they approach.



## Letter from School Place

I have now been a councillor for 3 years, and there has been “mid-term reshuffle” for most OIC positions (excluding Convener, Licensing Board and Orkney & Shetland Valuation Joint Board, which are appointed for the full life of the Council). There has not been a great deal of change. Janice Annal stepped down from the chair of the Education, Leisure & Housing Committee and was replaced by the vice-chair, Harvey Johnston, unopposed. Likewise unopposed was my position as OIC’s representative on the University of the Highlands & Islands Foundation. I now have an extra committee, Monitoring & Audit, and have been additionally appointed to the Carbon Management Plan Working Group and as substitute member of the Dounreay Stakeholders Group. Most directly relevant to the North Isles Ward is that I now have a seat on the Empowering Communities Steering Group. I have left the Human Resources Sub-Committee, otherwise I remain on the same bodies I was on before, namely the Policy & Resources Committee, the Orkney Islands Area Licensing Board, Licensing Sub-Committee, and the Education, Leisure & Housing Committee. Vice-chairs will be appointed when each of the committees next meet, and membership of the College Management Council has yet to be decided.

In addition to the Special General and Special Policy & Resources Committee meetings at which the appointments were made, I have also taken part in a normal General Meeting, Licensing meetings, Orkney College’s Quality Working Group, a video-conference from Kirkwall with Stronsay Community Council, a meeting of the Orkney & Shetland Valuation Joint Board, seminars on housing in Orkney and the Kirkwall Care Home, and a meeting of the Sanday Parent Council.

On behalf of Sanday Community Council I agreed to fly the Union Flag at the West Manse to celebrate the 70<sup>th</sup> anniversary of Victory in Europe Day. Six days before this the flag got an airing commemorating the birth of HRH Princess Charlotte Elizabeth Diana of Cambridge.



### Flying the flag for a new princess and VE Day

At the Longhope Swimming Gala I was given the task of timer. Well done to Westray for winning. And well-done again to Westray for being declared Orkney Home Produce Champion at the “Homemade in the Parish” competition at KGS, and congratulations to Shapinsay for being awarded the prize for best-presented table. Rousay, Egilsay & Wyre and Sanday also had excellent spreads. The food from all of them tasted delicious, however I had to be careful not to sample too many of the alcoholic beverages as I was driving south on Council business that afternoon!

The Sheriff Court has upheld the Licensing Board’s decision (proposed by me at the first application in March 2014) to refuse a licence for a bookmakers shop in Kirkwall containing fixed-odds betting terminals. This result confirms that we were right to have the courage (even in the face of odds stacked, allegedly, in favour of the gambling industry) to stand by the principle of protecting the vulnerable in our community.

In June I shall be flying to Papay and sailing to Shapinsay to attend their respective community council meetings.

*Stephen*

Cllr Dr Stephen Clackson  
West Manse, Sanday  
stephen.clackson@orkney.gov.uk

**Rousay Lap 2015**  
**Saturday 29<sup>th</sup> August 2015**

**Would you be interested in being a Volunteer Marshal for the Lap?**

**Marshal Points**

Midhowe Broch; Wasbister corner; Fa'Doon turning; Rousay School

**First Aid Training**

Free basic first aid training will be offered to all volunteer marshals, if you do not already hold a first aid qualification, but this is optional.

**Vouchers**

All marshals will be offered a £10 voucher each.



**Interested?**

Please contact Helen in the Office as soon as possible - telephone 821 229.



**Wester Garden Products**

Wester Garden Products are now selling ornate paving slabs. We have over 300 moulds and 40 different designs we also make block wall facing stones and ornate edgings plus stepping stones.

Please visit our Facebook page or call round.

821 424

**For Sale**

850MM SHOWER CUBICLE AND TRAY

760MM SHOWER TRAY

BATH SHOWER SCREEN

OFFERS?

ED FIRTH, NEDYAR, 821477



**For Sale**

Under counter fridge, works fine.  
Bit of rust on front door.

Glebe 821340  
07850 064 093

A donation to Triangle Club welcome.

Frances

All items for the July 2015 Review should be received by  
The Editor, Kayleigh Tipper, by **Saturday 27 June 2015, 5pm.**

Telephone: 01856 821 360

E-mail: [kayleigh@aroundrousay.co.uk](mailto:kayleigh@aroundrousay.co.uk)

The Review is printed and published by the **Rousay Community Association**

